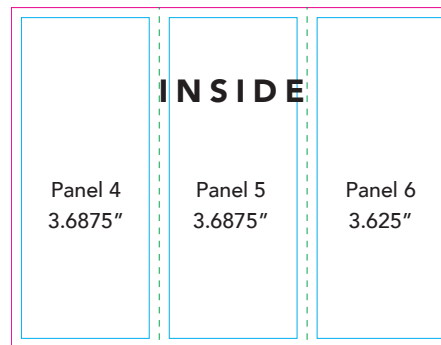
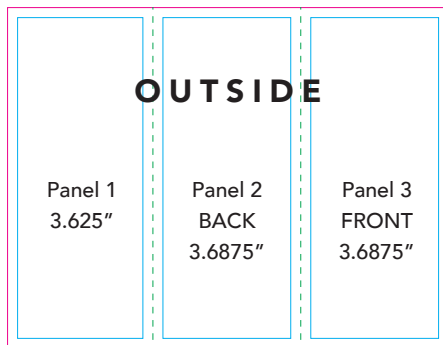
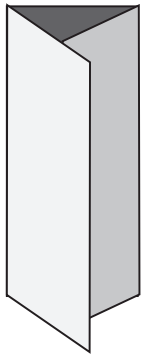


Common file sizes

Files should have a minimum of 0.125" bleed if any images or colour go to the edge of the artwork. A minimum of 0.125" safety (or margin) is recommended for all files.

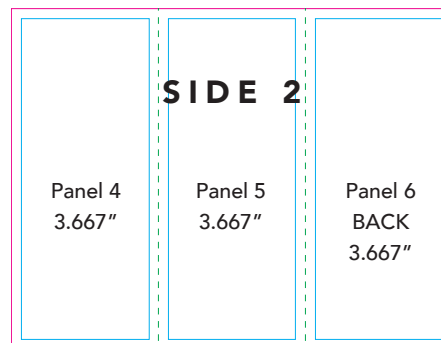
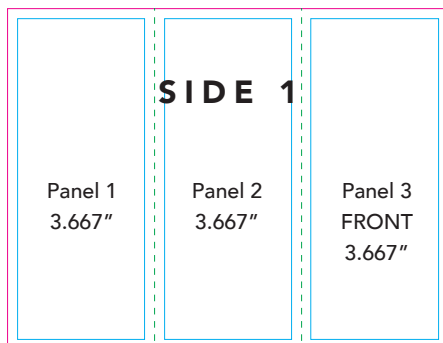
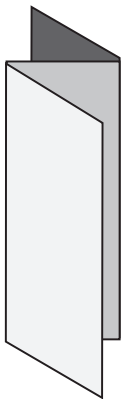
| | Width | Height | Notes |
|-------------------|-------|--------|----------------------------------|
| Business Cards | 3.5" | 2" | |
| Tri-fold Brochure | 11" | 8.5" | See panel sizes and layout below |
| Postcard | 6" | 4" | |
| Poster | 24" | 36" | |

Z or Roll Fold Brochure



Note that the safety (or margins) should be a minimum of 0.125" from each fold (shown in green) to ensure that text or logos are not too close to the edge when folded

Accordion Fold Brochure



If printing with bleeds please include crop marks in your print file.

See our document on creating a print file.



Image sizing: for best print results images should be created or saved at 100% scale and minimum of 300 DPI (Dots Per Inch)